

INSUL-TUBE[®] SOLAR

insulation technologies





SOLAR ENERGY IS BOOMING

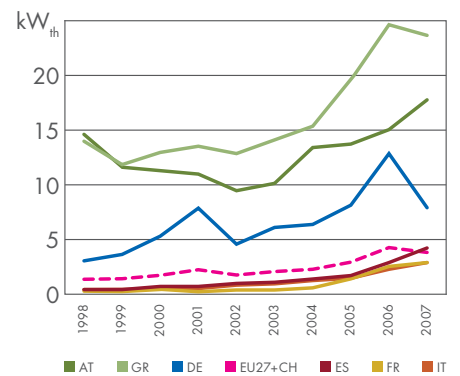
Join the boom with INSUL-TUBE[®] SOLAR!



Cozy warmth. Even in today's world a crackling fire or a luxurious bath is the measure of all things. A sense of well-being for body and mind. But everything has its price – and uses energy. Whether oil, water power, electricity generated by nuclear power or wood – every source of energy has advantages and disadvantages. However, fossil fuels are running out and the need to live in a sustainable, yet comfortable way is growing. This is why there is increasing interest in solar energy. It is both ecologically and economically promising for the future. The market share for solar systems grew by 400% between 2002 and 2006 and worldwide growth in energy from solar power is 37% per year.

These are golden prospects for cleverly invested money. However, such a market requires innovative products. NMC has a long tradition of manufacturing technical foams. Whether for insulation against the heat or the cold or protection of sensitive items – far-sighted solutions are what single us out. The spark of tradition fuels our power of innovation. INSUL-TUBE® SOLAR is also the result of this energy. This first-class product is sustainable and efficient and is used in solar systems as a connection between the solar panels and the storage unit. Intelligent technology of today for responsible people of tomorrow.

Development of market per 1.000 capita



Source: Solar Thermal Markets in Europe Trends and Market Statistics 2007, June 2008



INSUL-TUBE[®] SOLAR

A secure investment in the future



Roll material

- Nominal diameters: DN16, DN20, DN25
- Roll lengths: 10 m, 15 m, 20 m, 25 m, 50 m
- Installation set included



Installation set

- Dimensions: DN16, DN20, DN25
- Content:
 - 4 union nuts
 - 4 clamp washers
 - 4 sealing rings
 - 1 double nipple
 - 1 large diameter washer

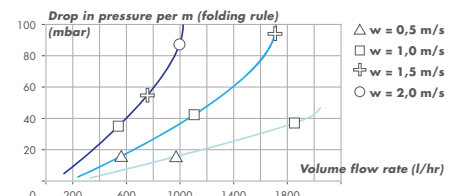
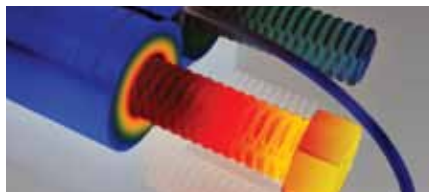
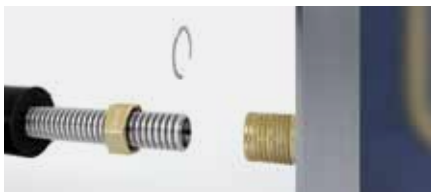


Oval mounting clamps

- Dimensions: DN16, DN20/DN25
- Content:
 - 4 clamps
 - 4 hanger bolts
 - 4 dowels



Nothing is more fundamental than the desire for security. Those who invest want to profit – without risk. For us that is self-evident. INSUL-TUBE® SOLAR withstands heat, UV radiation, ozone, dampness and mechanical damage. The interior noncorrosive stainless steel is durable and contributes to the high quality of INSUL-TUBE® SOLAR. The flexible stainless steel corrugated pipes of the separately pre-insulated supply and return pipes are suitable for installation in any location. The already integrated temperature sensor cable ensures controlled operation. To ensure flexible use there are three different nominal diameters and five lengths available. Furthermore, you can have a clear conscience due to the PVC and CFC-free production. Technology with brains. And a step towards a promising future.



Fast and easy assembly

- No special tool needed
- Simple installation due to flexible stainless steel corrugated pipes
- Various diameters and lengths available (up to 50 m with DN16 and DN20)

High protection

- Heatproof due to high temperature elastomer
- PE shell protects against UV, ozone and moisture penetration
- Noncorrosive, very tough stainless steel

Technical data

- Temperature resistance up to +150°C continuous, and up to +175°C short term
- Corrugated stainless steel pipe 1.4404 - 0,2 mm
- Heat conductivity 0,038 W/mK at 40°C and 0,033 W/mK at 0°C
- Fire behaviour: Euroclass E (DIN EN 13501-1)



INSUL-TUBE[®] SOLAR

Saves time and money



Cut the stainless steel pipe to length at the required place using a pipe cutter and straighten at the next corrugation.



Slip the nut over the stainless steel pipe, put the clamp washer on the first trough and press together.



Insert the large diameter washer into the union nut. Screw on the double nipple.



For any building project it is not just the quality of the material used that counts. The time in which the products can be installed is just as important. Since time is money. The fewest and most efficient steps possible lead to success. INSUL-TUBE® SOLAR adapts to your project perfectly due to its flexibility and different variations and it is fast and easy to assemble. Due to the Easy-join installation system that comes with it, the search for a suitable tool is a thing of the past. Leaving more time and money for the future.



Screw the double nipple and union nut tightly together and release again. Remove the large diameter washer and double nipple.



Insert the flat seal and check that the clamp washer fits correctly.



Connect INSUL-TUBE® SOLAR.

NMC sa

Gert-Noël-Straße - B-4731 Eynatten - Belgium
Tel. +32 87 85 85 00 - Fax +32 87 85 85 11
E-Mail: info@nmc.eu

nmc (uk) ltd.

Tafarnaubach Industrial Estate, Tredegar, South Wales - U.K. - NP22 3AA
Tel. +44 1495 713266 - Fax +44 1495 713277
E-Mail: enquiries@nmc-uk.com

www.nmc.eu

